

# The Role of Occupational Medicine in the Employment of People with Visual Impairment

## National Survey's Experiences

Sarolta Nagy MD

### Introduction

The Disabled Person's employment significantly influences their quality of life. Their job opportunity is depends on their health status, education and their place of home.

The Disabled Persons have similar diseases, like polulation has, only, in case of the disabled persons some diseases appear more often.

The Disabled Persons are undereducated and underemployed.

The Disabled Person's succesfull social integration promotes their education, learning profession, retraining and empolymment and the Occupational Health take a main rule in this support. foglalkozás-egészségügyi ellátásnak.

### We looked for the answers for the next questions:

1. Factors influencing the Labor Market integration.
2. Factors influencing the Employment.
3. The Assistive Technologies used by employed Visual Impaired Persons.
4. Employers and Colleagues attitude about Visual Impaired Persons.

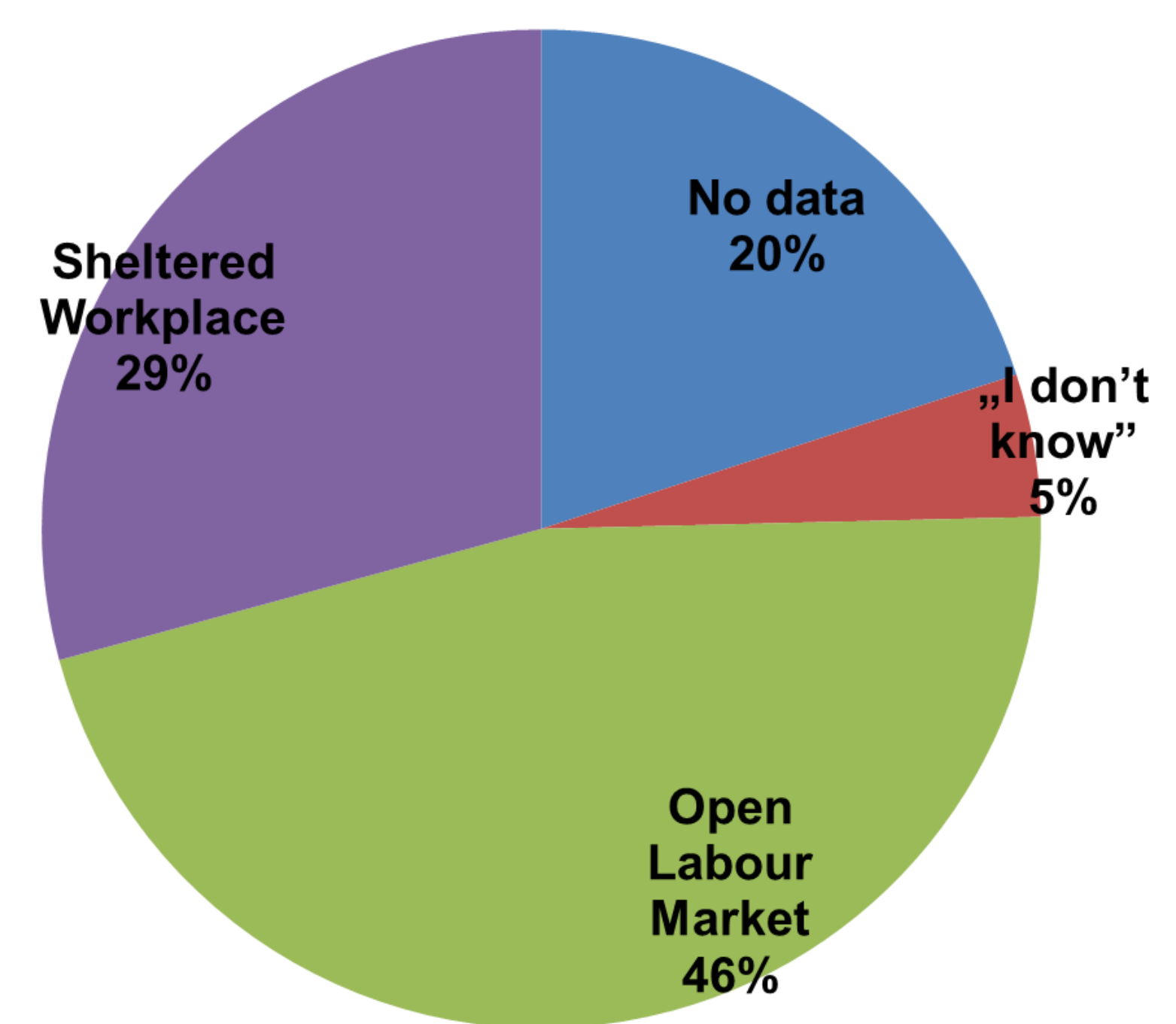
### Materials and Methods

- The barrier-free online quastionnaire included 33 questions.
- The quastionnaire was send by colleagues of Eötvös Loránd University Bárczi Gusztáv Faculty of Special Needs Education to adult Visual Impaired Persons in Hungary and to Civil Organizations.
- The anonymous data in escel table we processed with Pivot table, descriptive statistics, calculation the relative risk (RR) with 95% confidence interval.

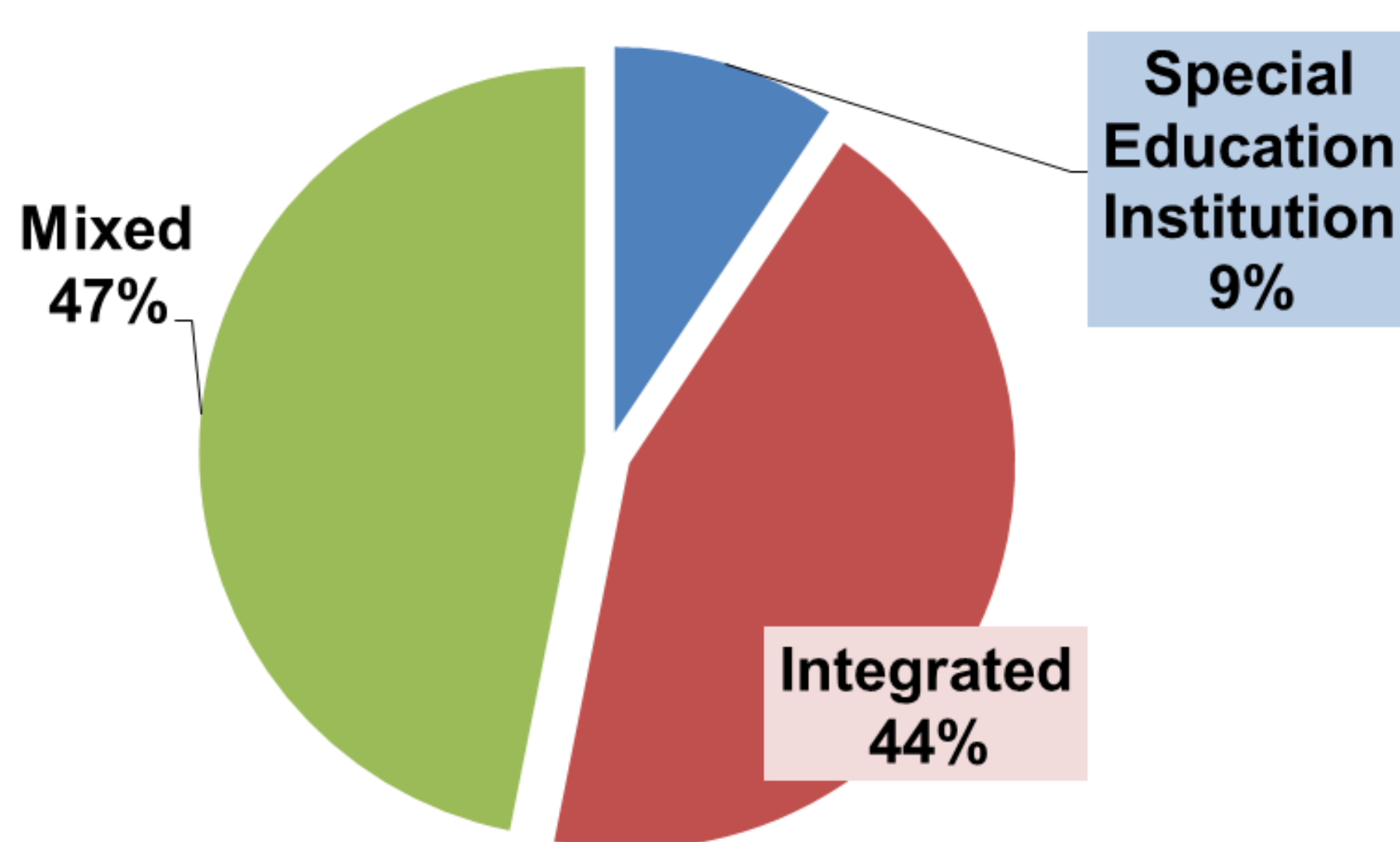
### Demographic results

- We received 68 filled out questionnaire, 65 quqstionnaire was evaulated.
- 39 (60%) Women and 26 (40%) Men filled in our questionnaire.
- 81% (52 Person) of Participants were 18-45 years old.

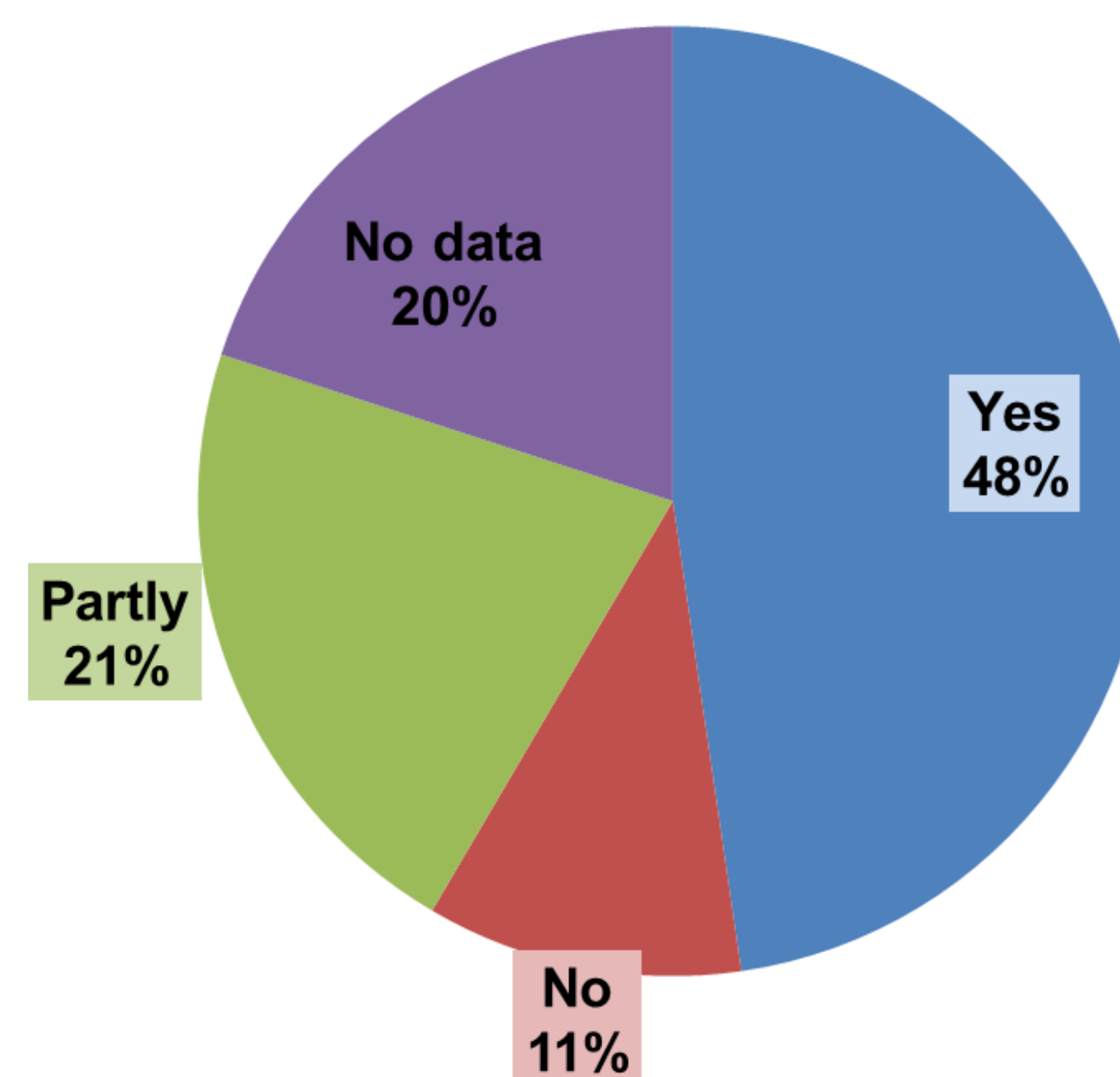
### The type of Workplace



### The type of School

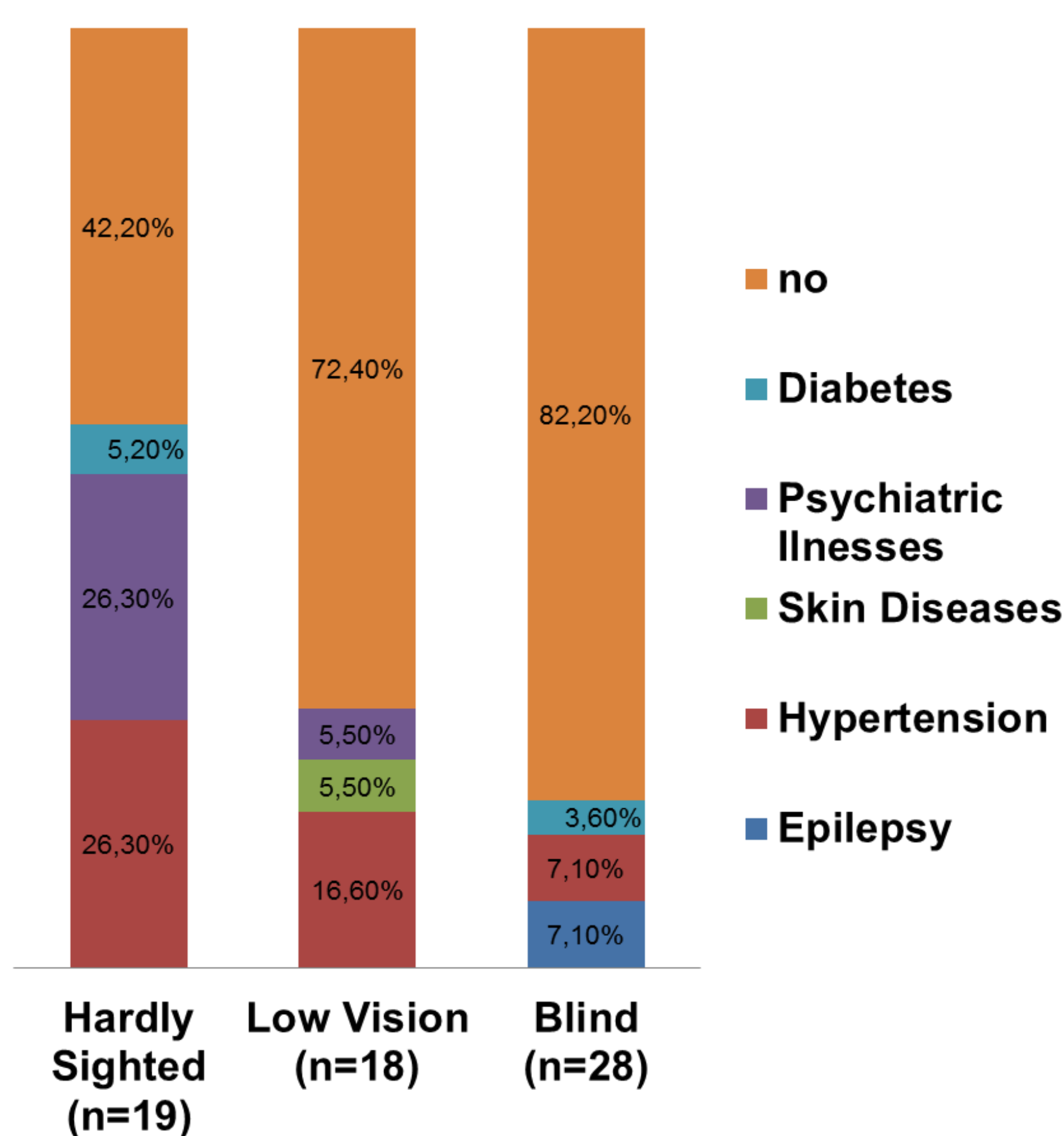


### Is Your Workplace properly barrier-free for You?

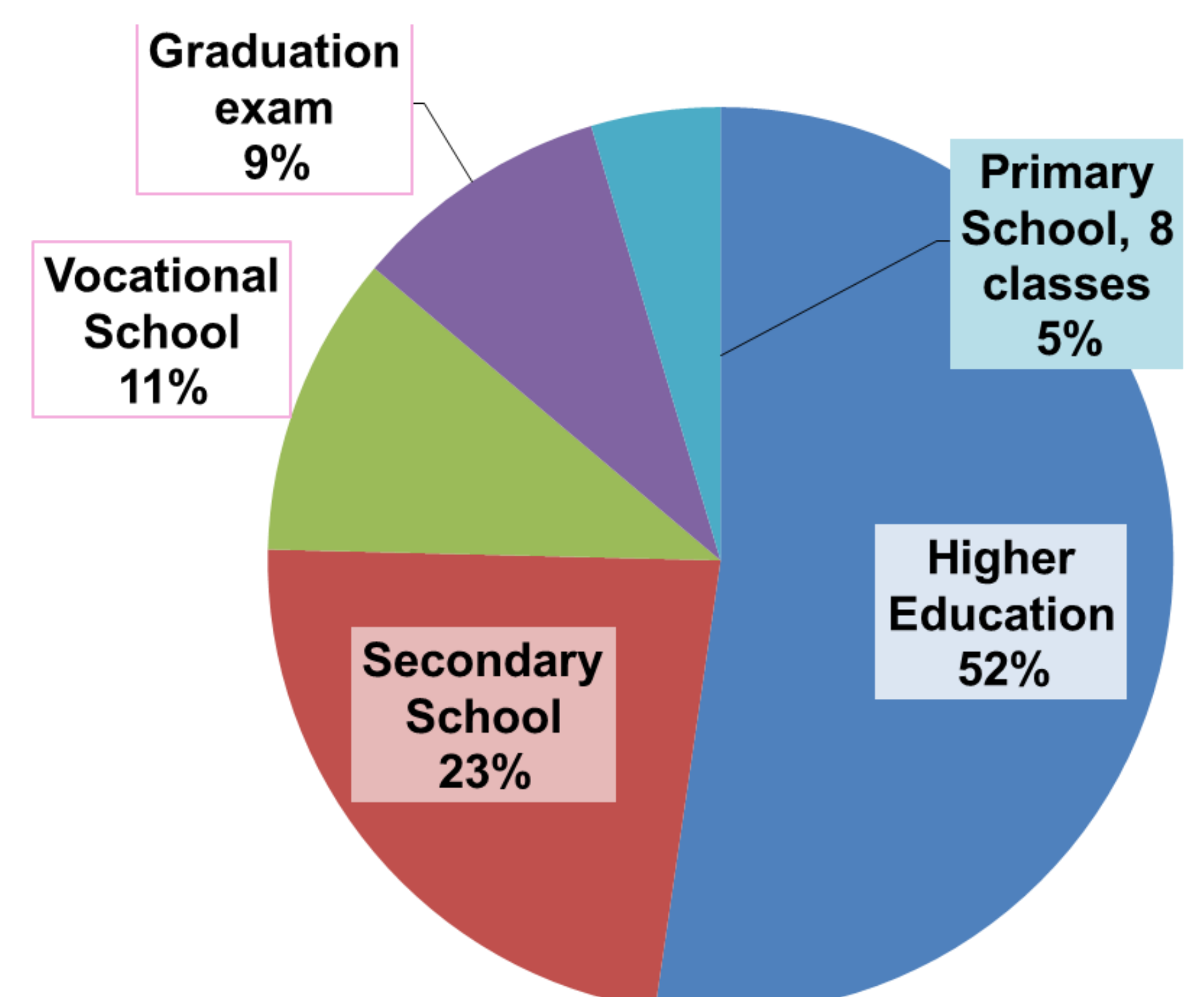


### Additional diseases

6,3 times more probable, that a hardly sighted Person will suffer from additional illness, than a blind Person will suffer from



### The highest level of Education (% distribution)



### Summary

Our questionnaire was filled in, mainly by Persons living in Budapest and Persons with higher level of education, than in case of previous questionnaires. Like in our previous researches, the Persons with visual impairment also like or would like to work in open labour market and the questions about their disability don't disturb them. In the case of Persons with visual impairment we can also see (like in case of hearing impaired Persons and disabled Persons), that Those Persons, who use the correct Assistive Technologies in majority are employed and educated.

Based on our Current Research, we can conclude:

The Persons with visual impairment felt important to participate in the quastinnaire preparing and the personal participation in research. More and more gates are opening for Persons with visual impairment in the social and workplace integration due to technical, electronic and digital devices developments.