

INTEG-ART PROGRAM

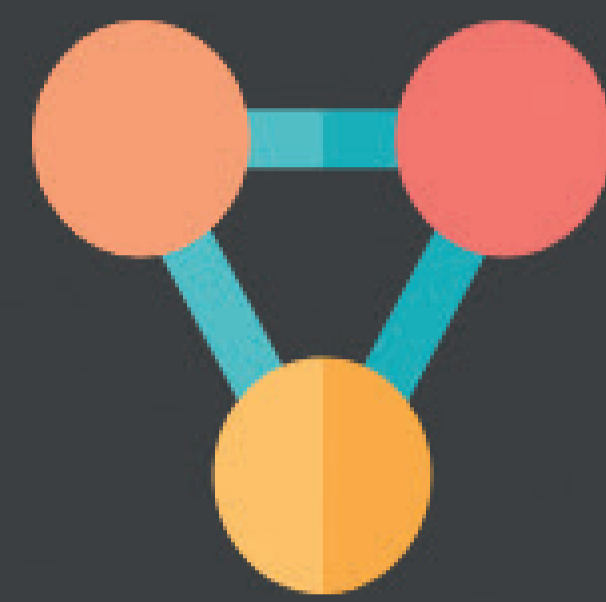


Program data



- 14 months (04/2018-05/2019)
- 2 major events – 220 participant
- 2*14 occasion for team occupation
- 350 contacts during occupation
- 5 local visually impaired artists introduced
- 9 well-known visually impaired artists' lifeway recognised

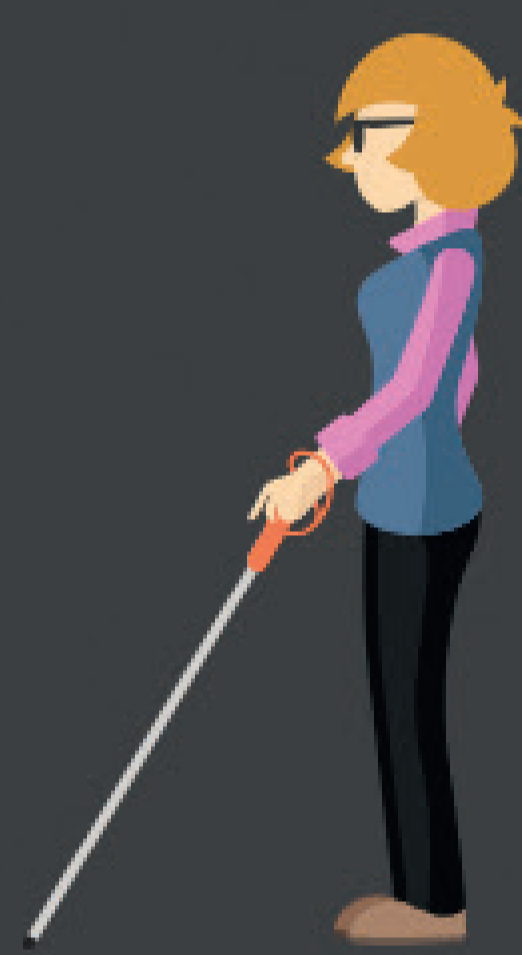
Activity



- INTEG-ART team occupation: self-realization for visually impaired people in different art branch
- Self-help team: solving everyday tasks in fellow community
- Self-power team and consultation: mental help for groups and individuals
- Call Center channel: rapid support without team occupation



Target group



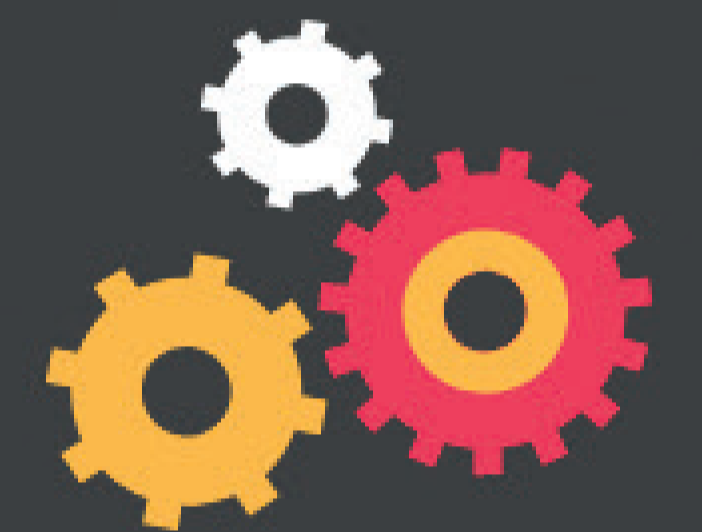
- Visually impaired people and their matter-of-course assistants
- Partner institutes and organizations
- Assistant specialists
- Wider society

The system of goals

Individual level



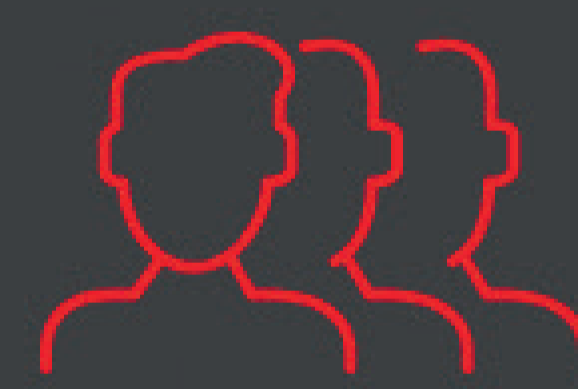
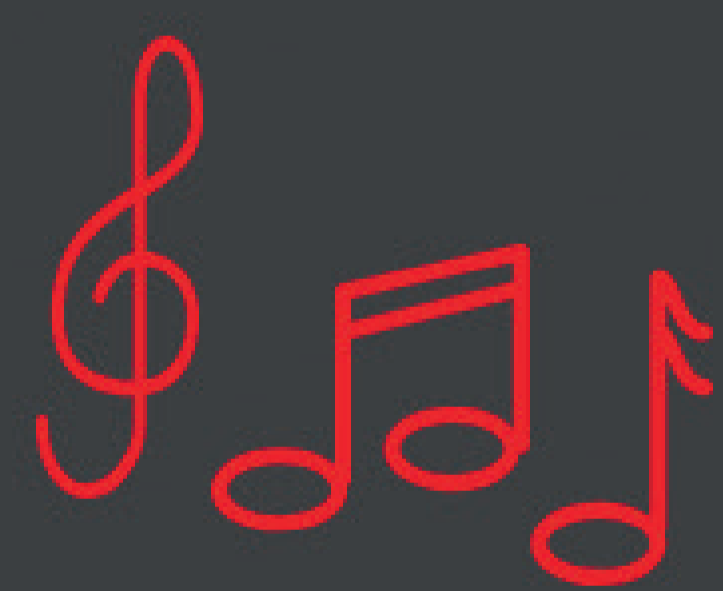
- improving societal utility,
- decrease of social isolation,
- knowledge development, increase of general awareness,
- developing skills to retain independence: fine motion, problem solving, creativity etc,
- producing higher value by his/her own hands – better quality of life.



Themes:



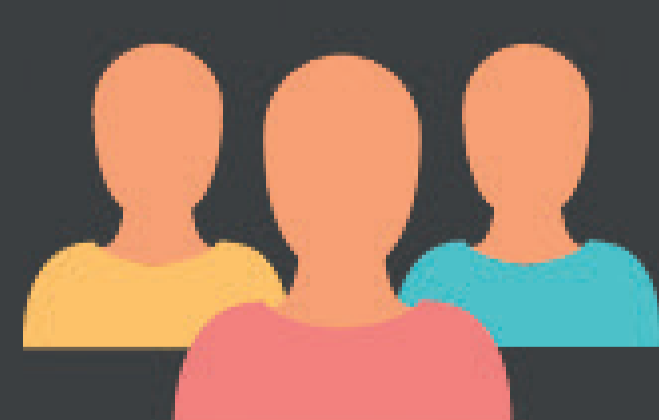
- painting
- weave – knitwork – crochet
- pottery
- poet – tail
- sing – music – dance
- film
- seasonal gift/decoration
- + knowledge development:
- lifework of popular visually impaired artists
- adaptive techniques of these artists



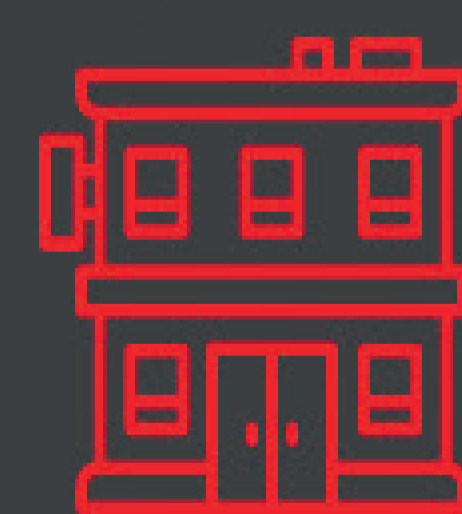
Team level

- supported fellow community,
- learning new techniques, and/or application potential the adaptive techniques acquired during rehabilitation program under controlled circumstances,
- improving social skills (conformation, cooperation, communication).

Specialists



- social worker
- mental help expert
- rehabilitation specialist
- + casual adviser:
- special education teacher and
- cultural manager



Institutional level

- complementary service to support the rehabilitation of low vision and blind people (follow-up / possibility to exercise),
- methodological development in the territory of daily living activities,
- another activity to insure the complex system of service to improve the quality of life of visual impaired people.

